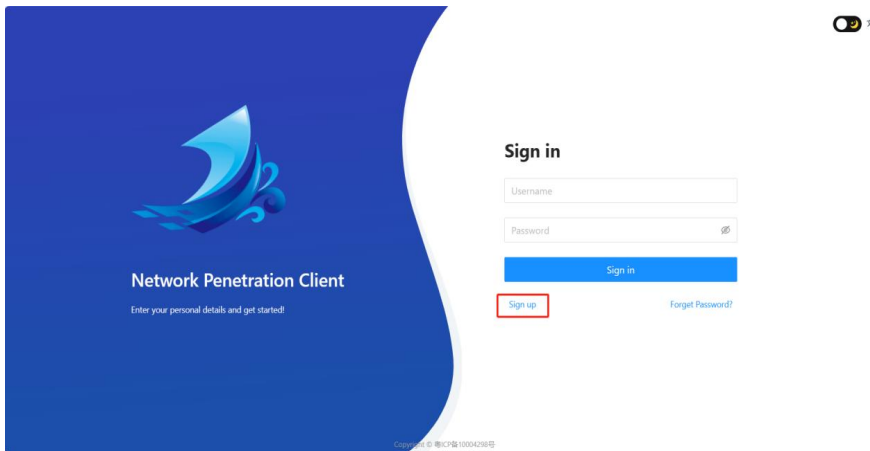


## 一、Register

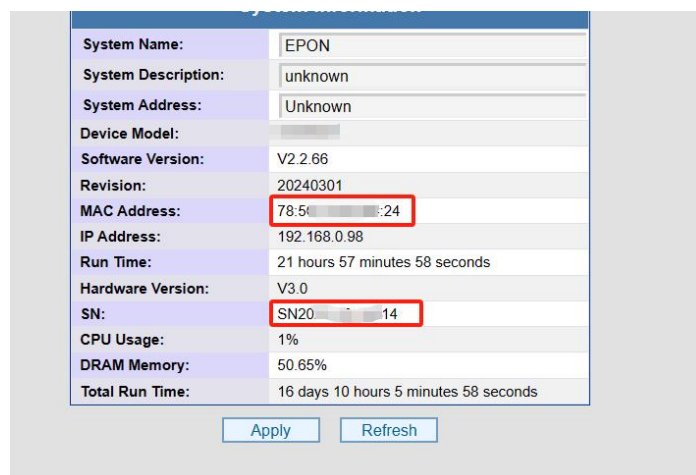
Register an account first <http://www.poncm.com> (Record your account and password, you will need them later)



## 二、Configuration

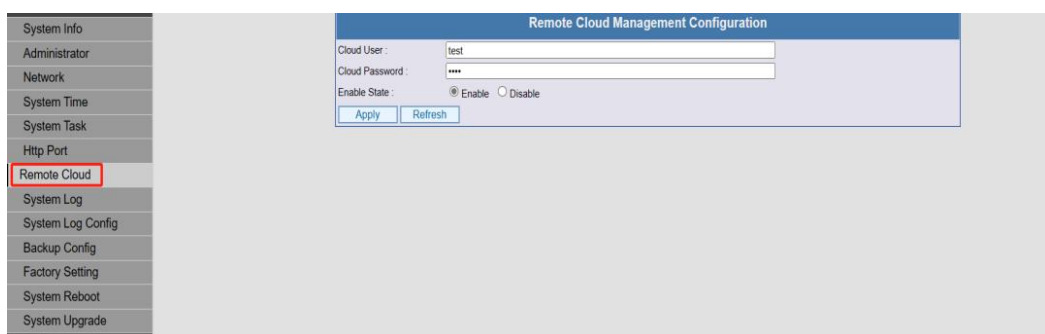
### 1. Upgrade

Upgrade your device to the latest version first (Record the MAC address of this device, which you will need later.) :



### 2. Configuration

Now in the testing phase, the management card can be directly configured via the web (This configuration is 2 ports) .



### 3. Configure management address ip

**2PON:** It should be noted that the out-of-band management port is an IP address that can access the Internet. In order to correctly access the cloud server,

- 1) Configure the management address so that it is in the same network segment as the intranet (be careful not to cause IP conflicts).

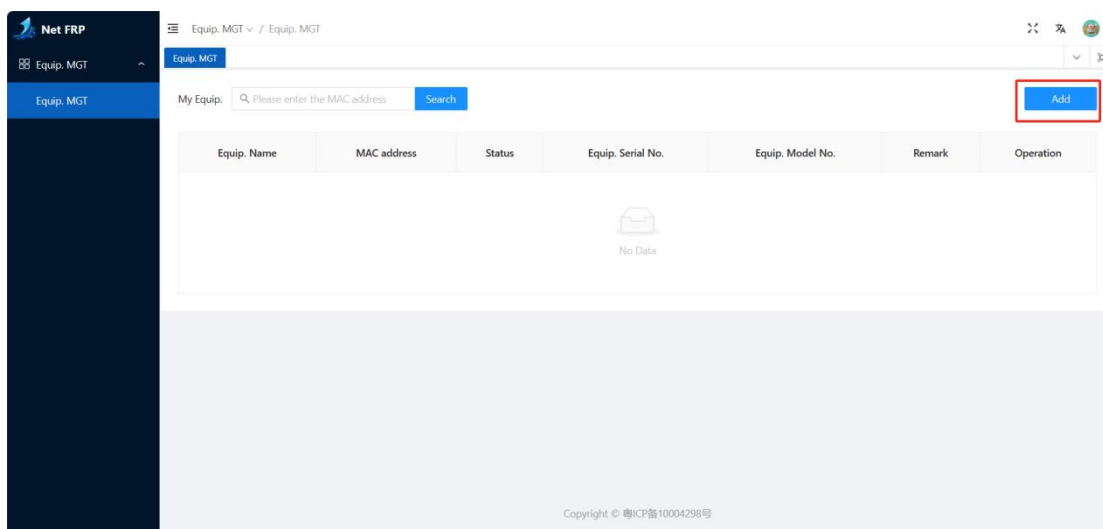
The screenshot shows a web interface for configuring the management IP address. On the left is a navigation menu with the following items: System Info, Administrator, Network (highlighted with a red box), System Time, System Task, System Log, System Log Config, Http Port, Backup Config, Factory Setting, System Reboot, System Upgrade, Save Configuration, ONU Management, Port Management, Statistic, Vlan Config, and Bandwidth Config. The main content area is titled 'Management IP Address Config' and contains the following fields:

IP Address	192	168	0	98
Netmask	255	255	255	0
Gateway IP	192	168	0	1
Management VLAN ID	0 (0-Meaning disable management VLAN)			

At the bottom of the form are two buttons: 'Apply' and 'Refresh'.

- 2) Then the mgmt management port is connected to the Internet (in the local area network of the configured network segment).

### 三, Adding devices to the cloud platform



#### Add

\* Equip. Name

\* MAC address  
 [Smart Fill](#)


\* Equip. Serial No.

\* Equip. Model No.

Remark

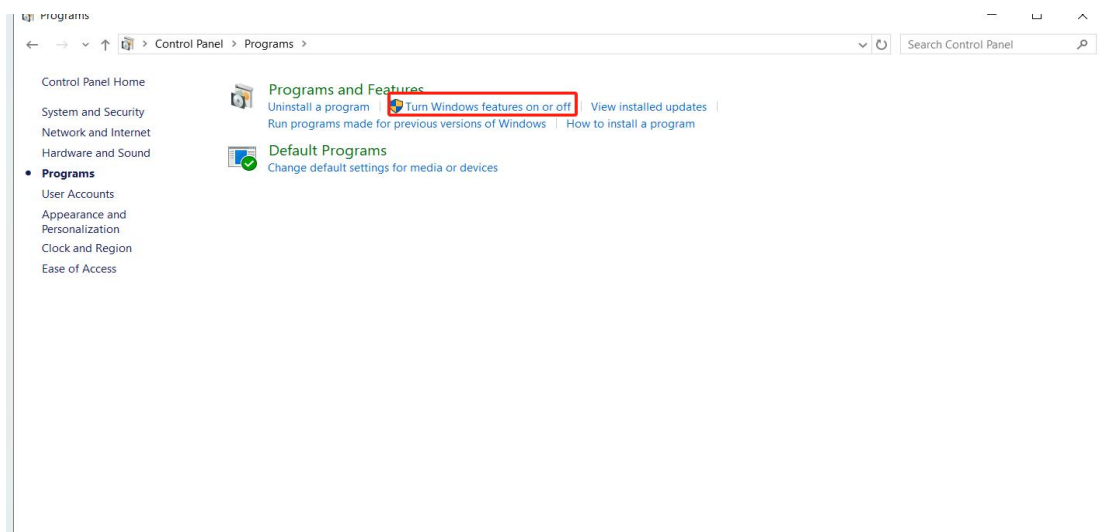
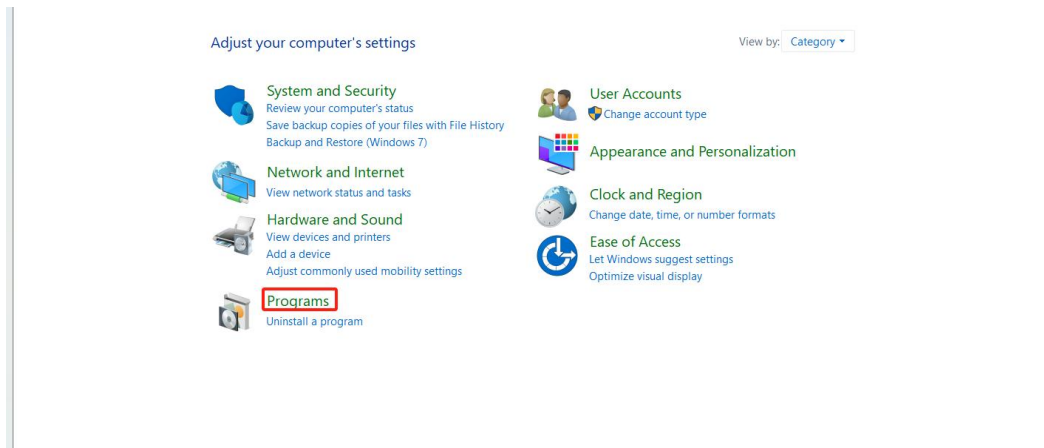
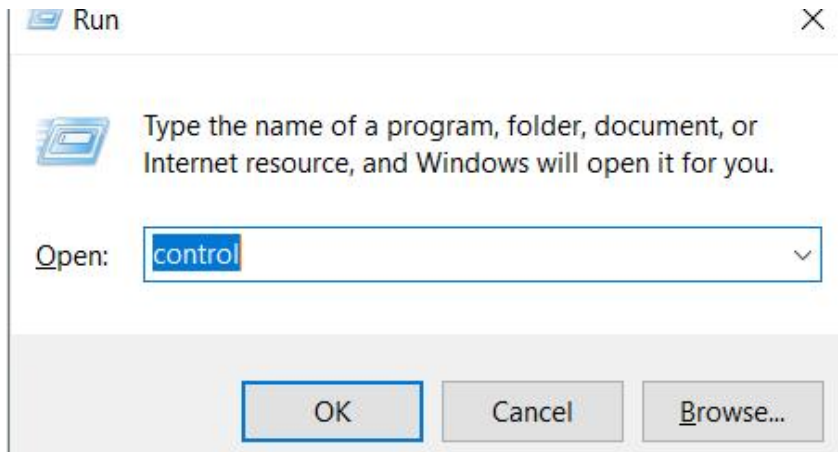
At this point, you can remotely log in to the WEB interface of this OLT device through the management WEB interface provided by the cloud server.

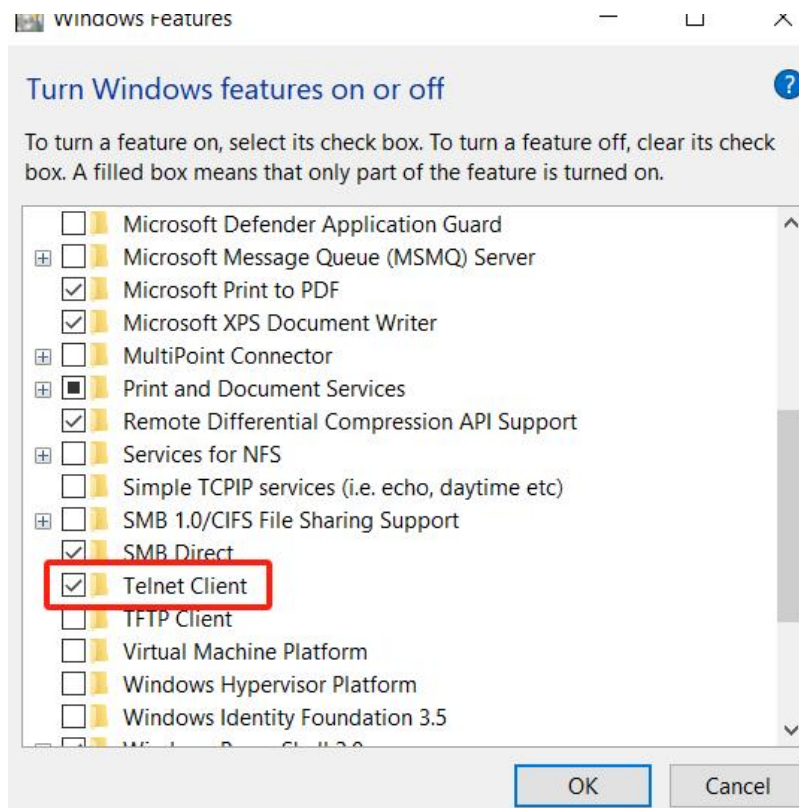
# Appendix:

Keyboard win key 

—, Enable the telnet function on your computer

Win+R Open





二、 How to use terminal software Putty/Securect/Mobaxterm by searching Baidu